



NY Renewables – Overview and YTD Operation

Reposted in Response to Stakeholder Feedback – Slides and Tables with Green Titles are new

Cameron McPherson

Operations Analysis & Services Analyst

MIWG

March 20, 2020, Rensselaer, NY

Agenda

- Overview of NY Wind
- Economic Wind Curtailment Statistics
- Overview of NY BTM Solar
- Questions

Background on Metrics

- Unless otherwise stated, Wind data accounts for all wind plants installed in the NYCA.
- Unless otherwise stated, Wind and Solar Capacity Factors are inclusive of ALL hours in 2019 and do not adjust for periods of resource outages or derates.
- Behind-the-meter (BTM) Solar production and capacity factors are based on estimates from NYISO's Solar/PV monitoring vendor. They are influenced by the pitch and tilt of the sampled installations being used to scale up production estimates. They are not a direct measurement of solar production.
- All BTM solar production is measured in DC (direct current).
- Capacity Factors are calculated as follows:

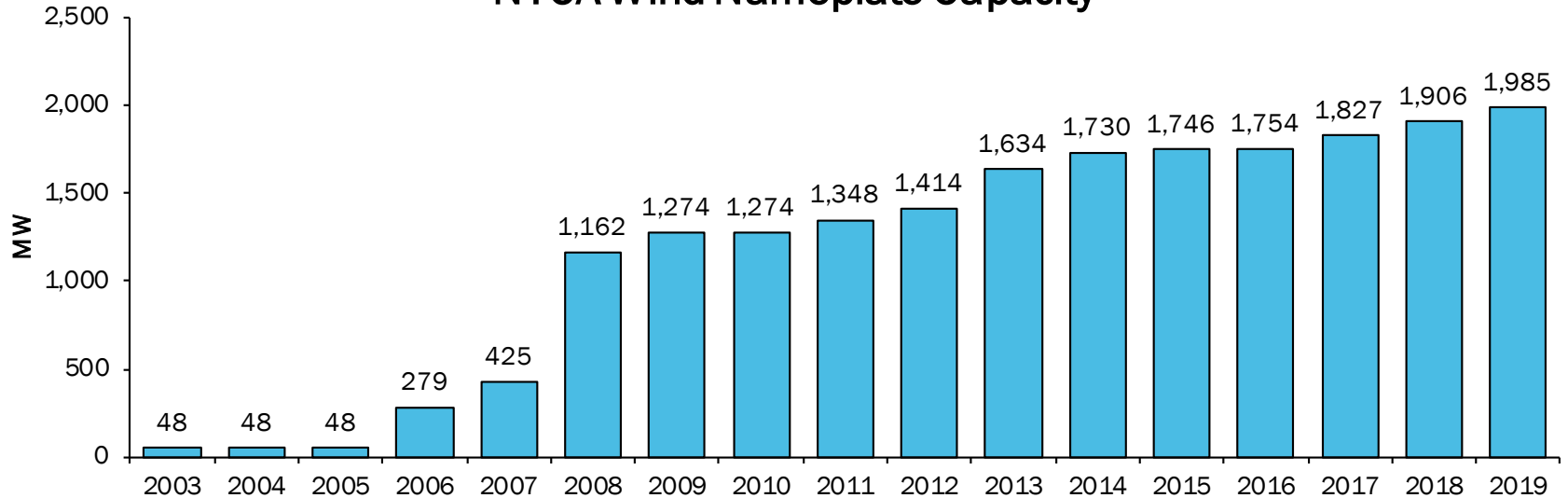
$$\text{Capacity Factor} = \frac{\text{Total Generated Energy}}{(\text{Nameplate Capacity})(\text{Total Hours})}$$

NYCA Wind 2019

DRAFT – FOR DISCUSSION PURPOSES ONLY

Overview

NYCA Wind Nameplate Capacity

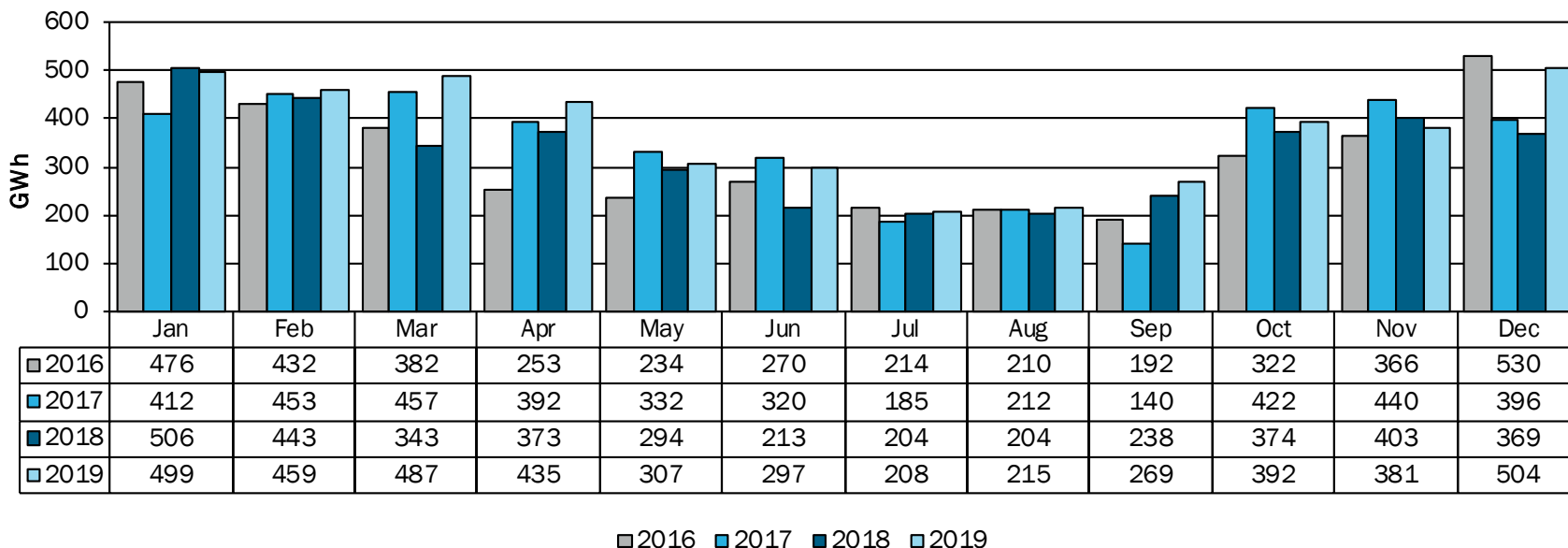


DRAFT – FOR DISCUSSION PURPOSES ONLY

NY Wind Generation

Total Annual Wind Production (GWh)			
2016	2017	2018	2019
3,880	4,162	3,965	4,453

NYCA Wind Plants - Monthly Production

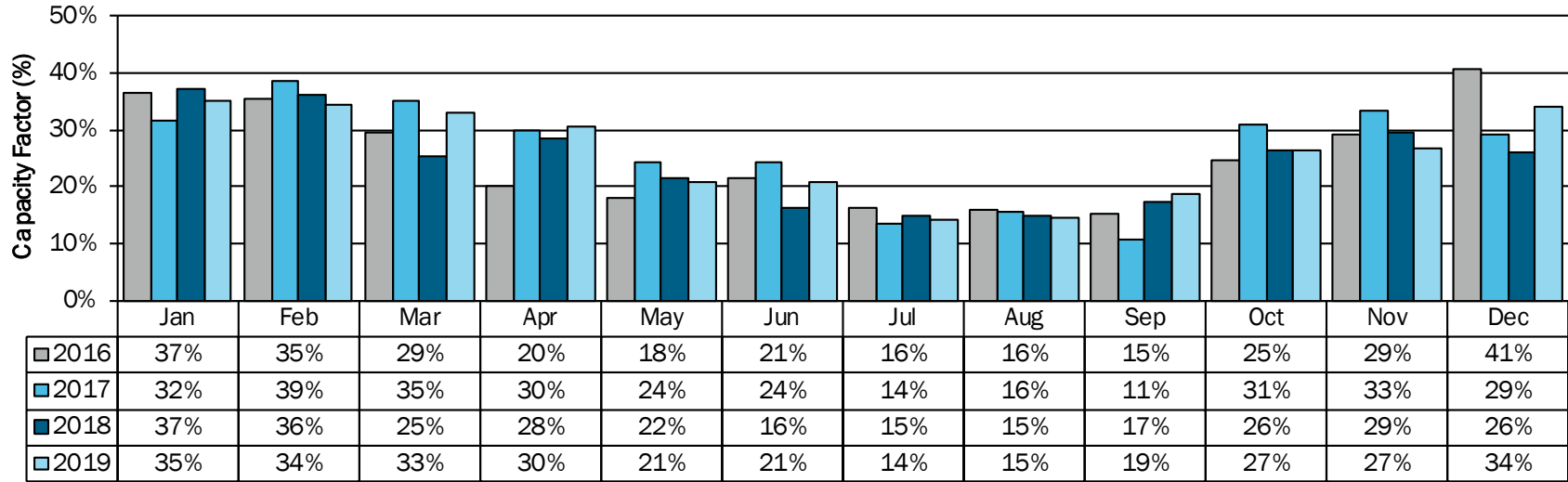


DRAFT – FOR DISCUSSION PURPOSES ONLY

NY Wind Capacity Factors

Annual Wind Capacity Factor			
2016	2017	2018	2019
25%	26%	24%	26%

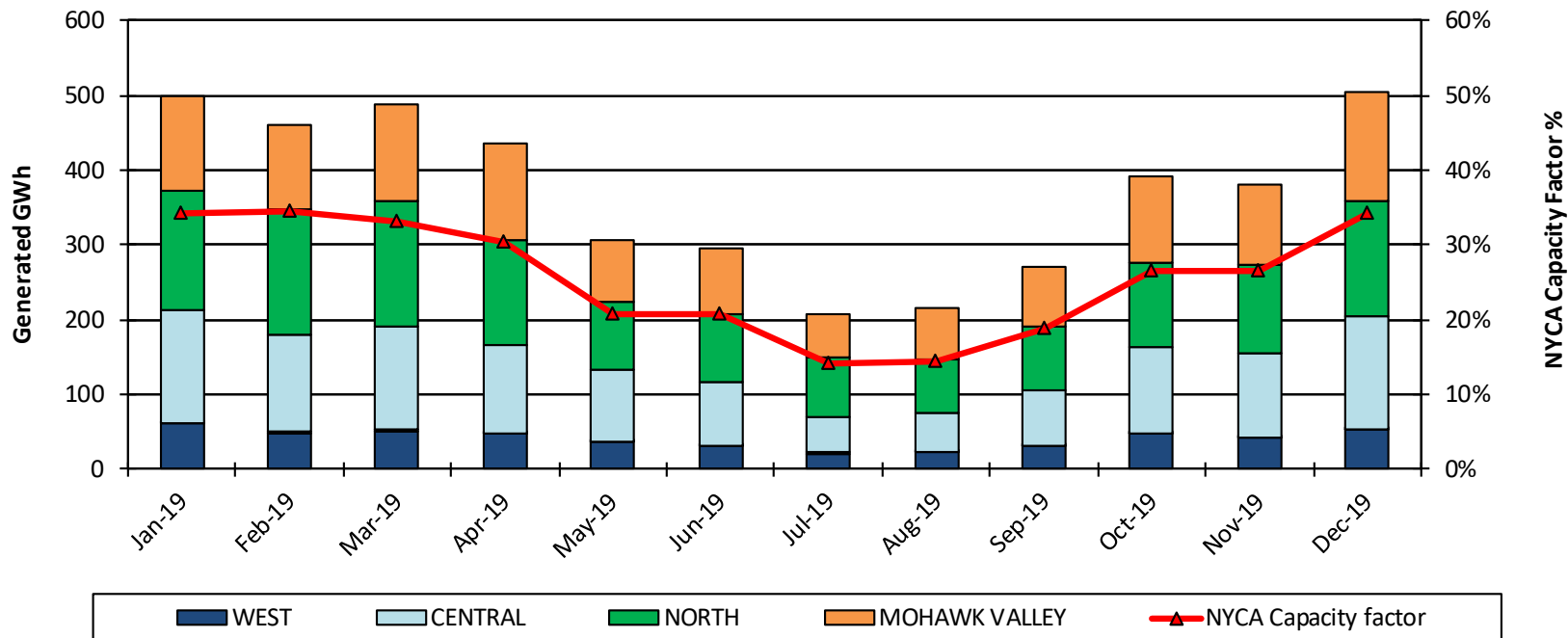
NYCA Wind Generation – Monthly Capacity Factor



■ 2016 ■ 2017 ■ 2018 ■ 2019

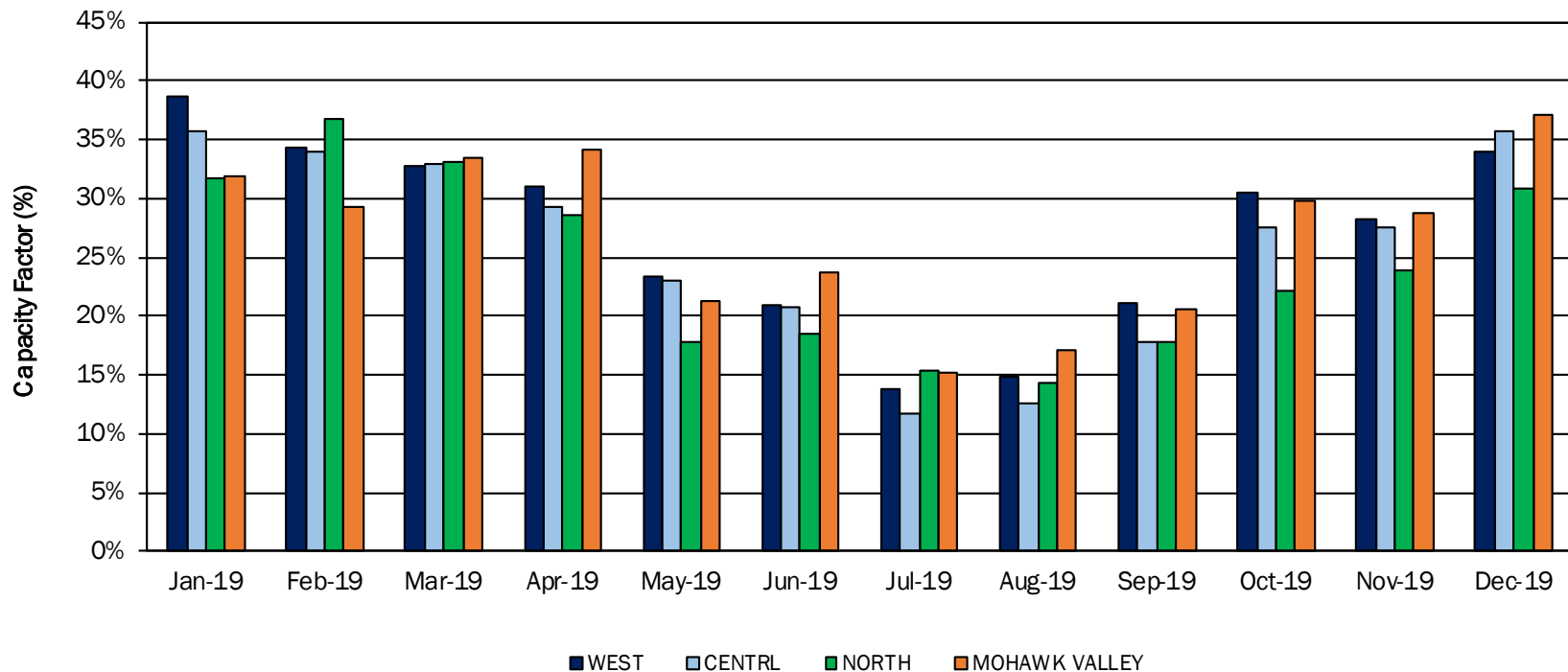
DRAFT – FOR DISCUSSION PURPOSES ONLY

Monthly Wind Production by Zone



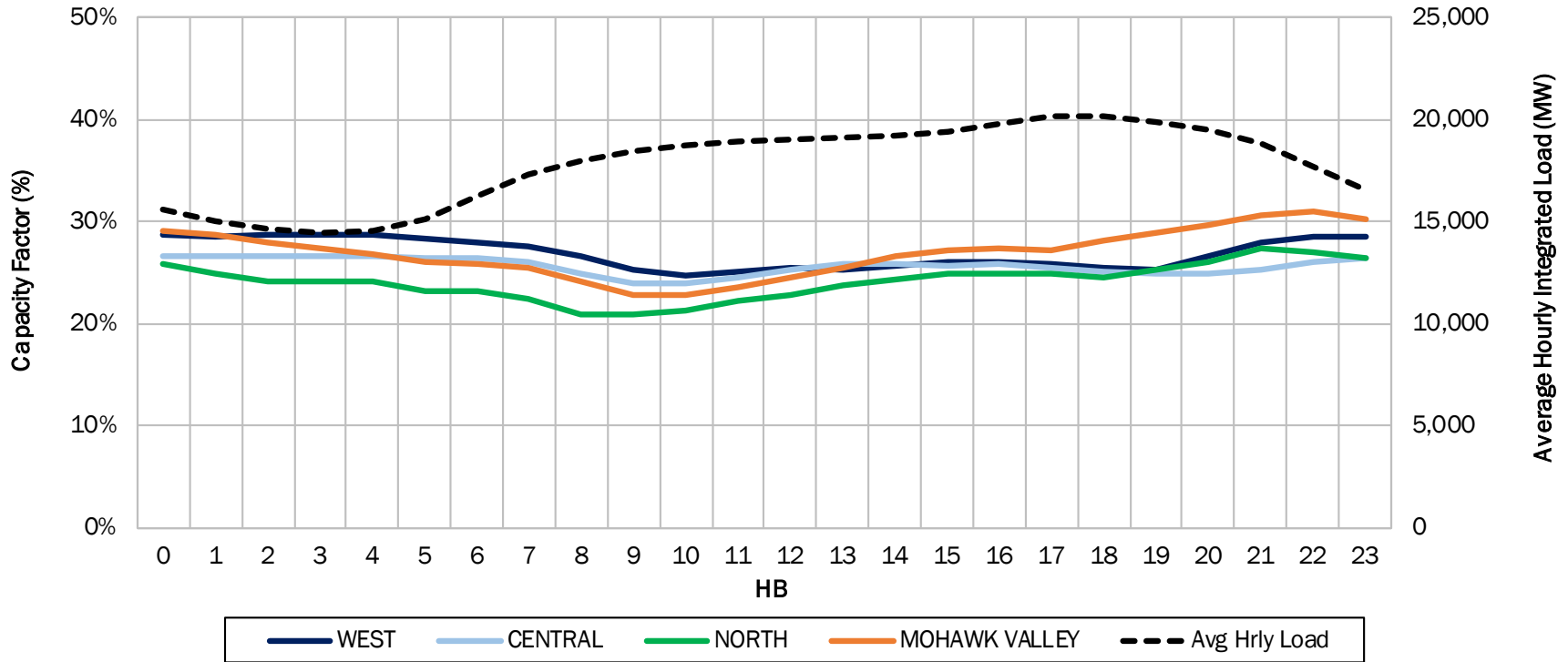
DRAFT – FOR DISCUSSION PURPOSES ONLY

Monthly Wind Capacity Factors by Zone



DRAFT – FOR DISCUSSION PURPOSES ONLY

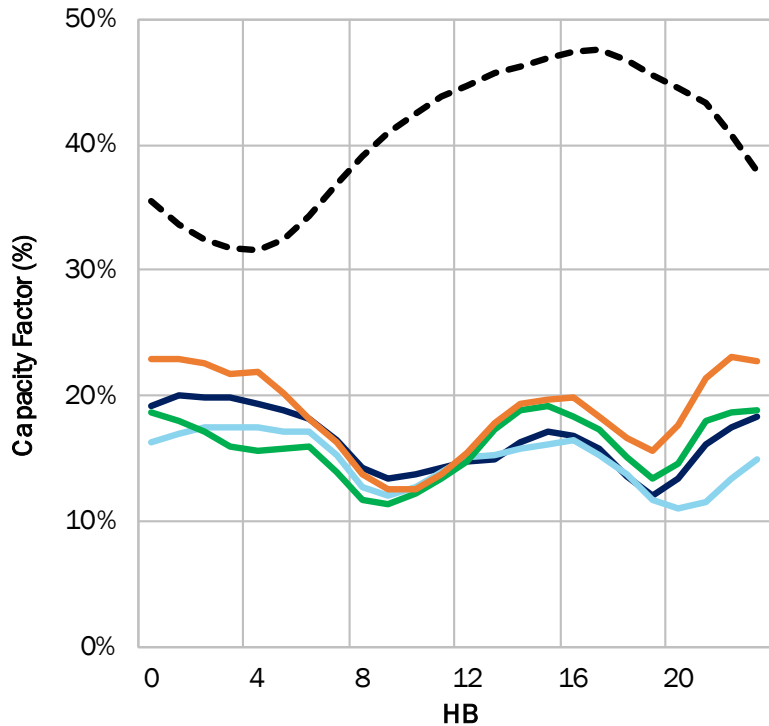
2019 Average Hourly Wind Capacity Factors by Zone



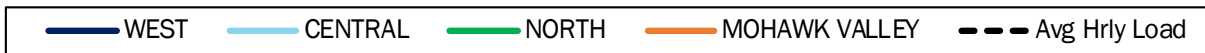
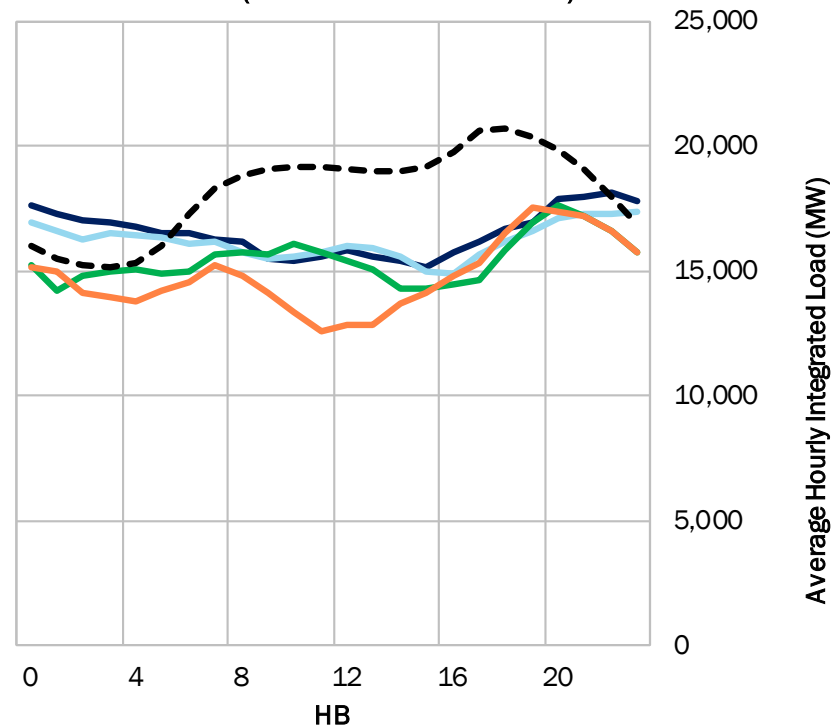
DRAFT – FOR DISCUSSION PURPOSES ONLY

2019 Seasonal Average Hourly Wind Capacity Factors by Zone

Summer Months (Jun 2019 - Aug 2019)

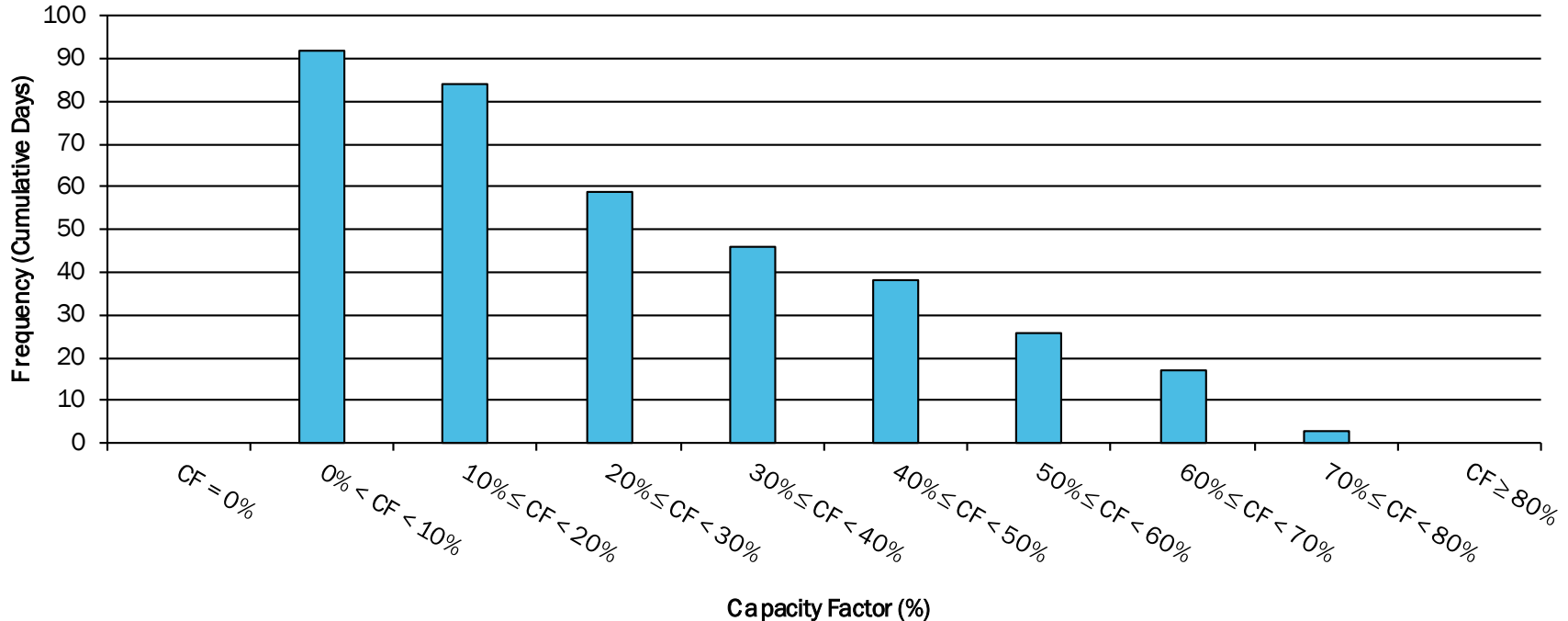


Winter Months (Dec 2018 - Feb 2019)



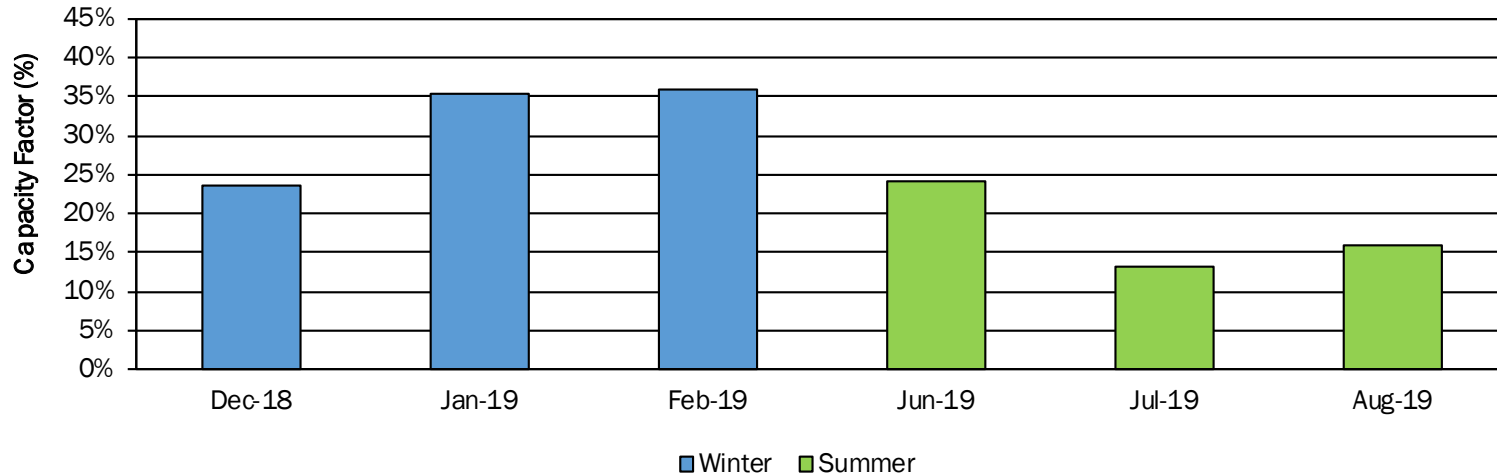
2019 NY Wind Capacity Factor Distribution

Daily Capacity Factor (CF) Distribution for 2019



DRAFT – FOR DISCUSSION PURPOSES ONLY

2019 Average Wind Capacity Factors over ICAP Months/Hours

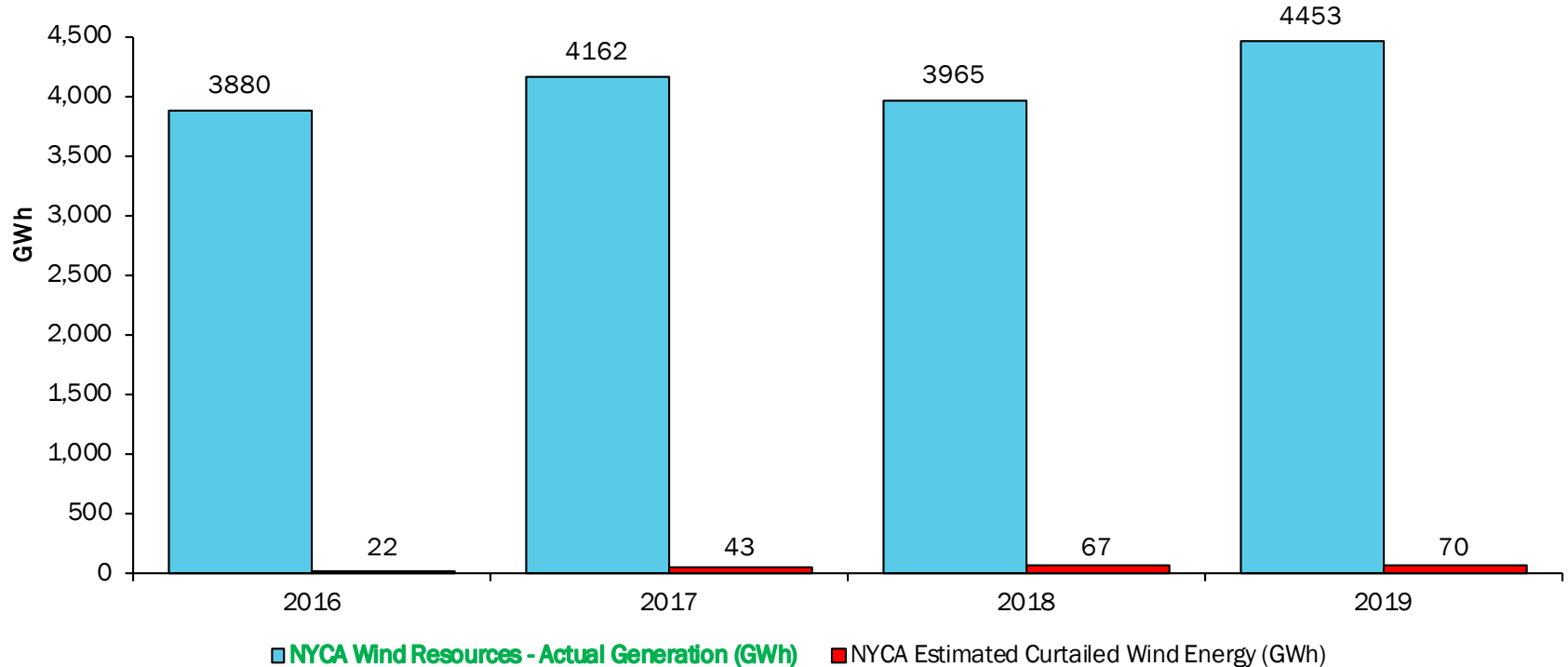


Season	Months	Hours	Average Wind Capacity Factor
Winter	December - February	16:00 until 20:00	31.55%
Summer	June - August	14:00 until 18:00	17.70%

DRAFT – FOR DISCUSSION PURPOSES ONLY

NY Economic Wind Curtailments

NYCA Wind Plants - Annual Production & Economic Curtailments

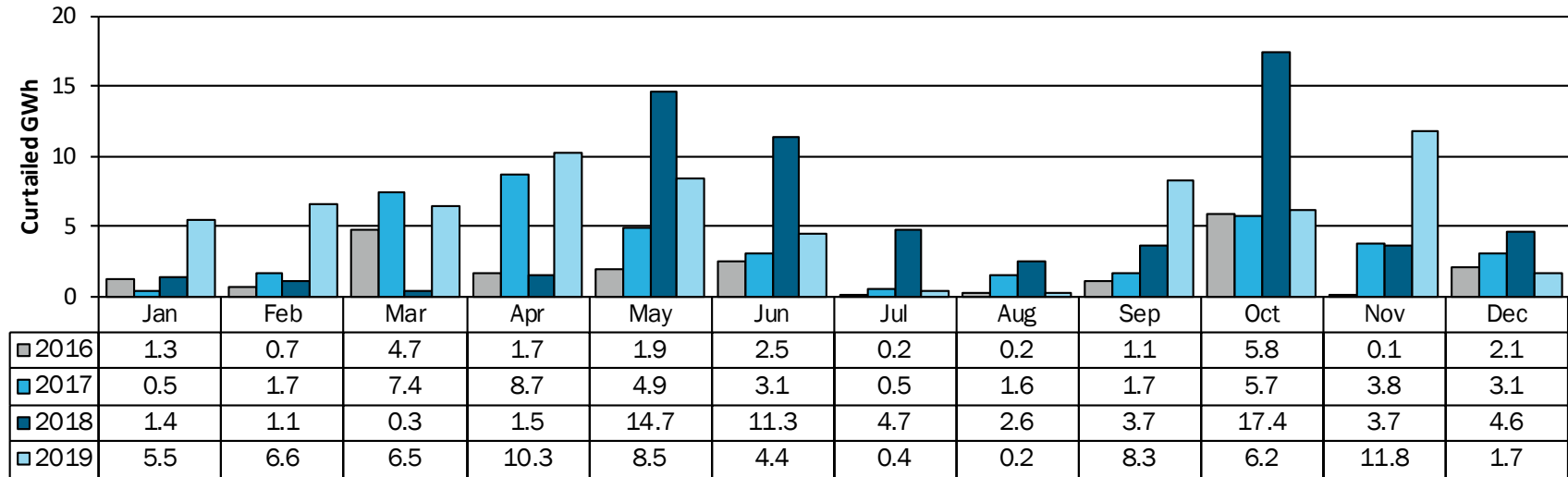


DRAFT – FOR DISCUSSION PURPOSES ONLY

NY Economic Wind Curtailments

Total Annual Wind Curtailments (GWh)			
2016	2017	2018	2019
22.1	42.6	66.9	70.5

NYCA Wind Plants - Monthly Estimated Curtailed Energy

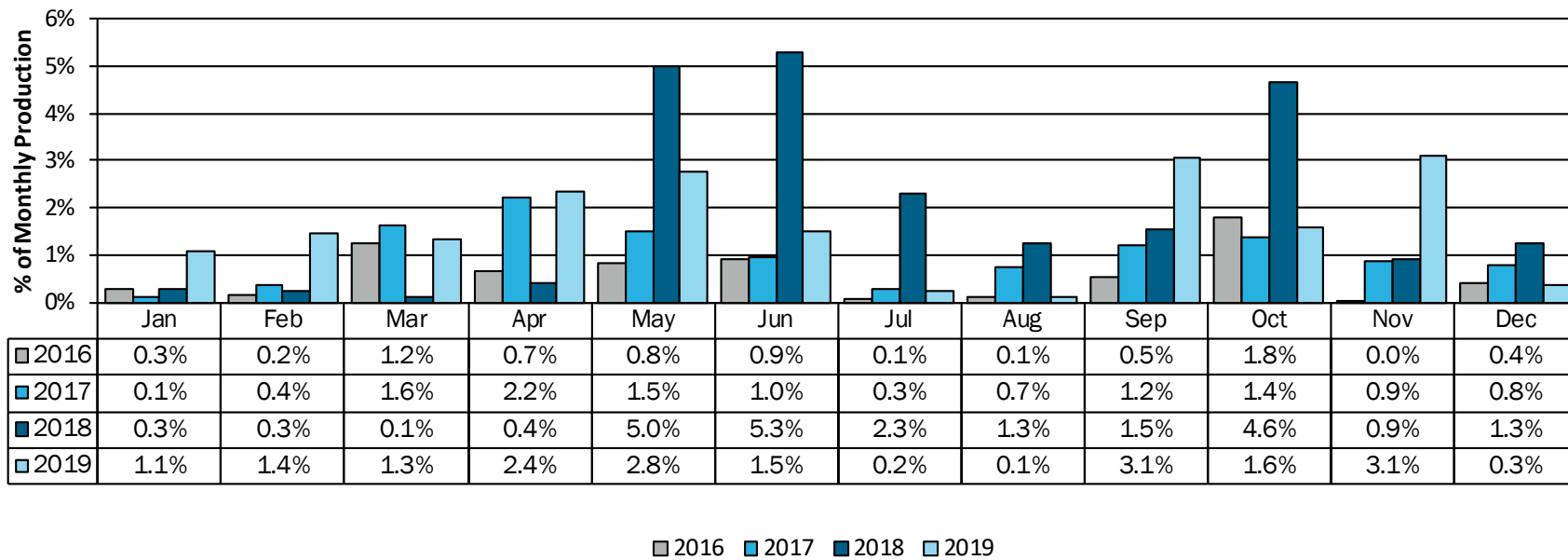


2016 2017 2018 2019

DRAFT – FOR DISCUSSION PURPOSES ONLY

NY Economic Wind Curtailments

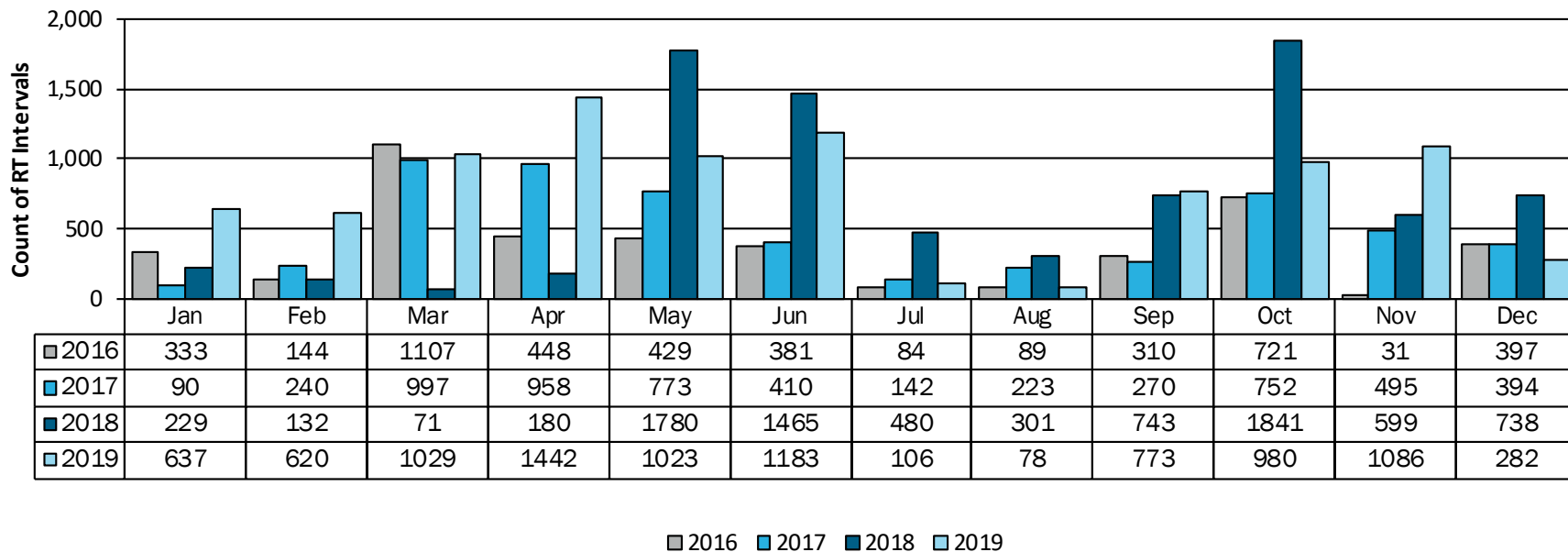
NYCA Wind Plants - Monthly Estimated Curtailed Energy %



NY Economic Wind Curtailments

NYCA Wind Plants - Monthly Estimated Curtailed Interval Count

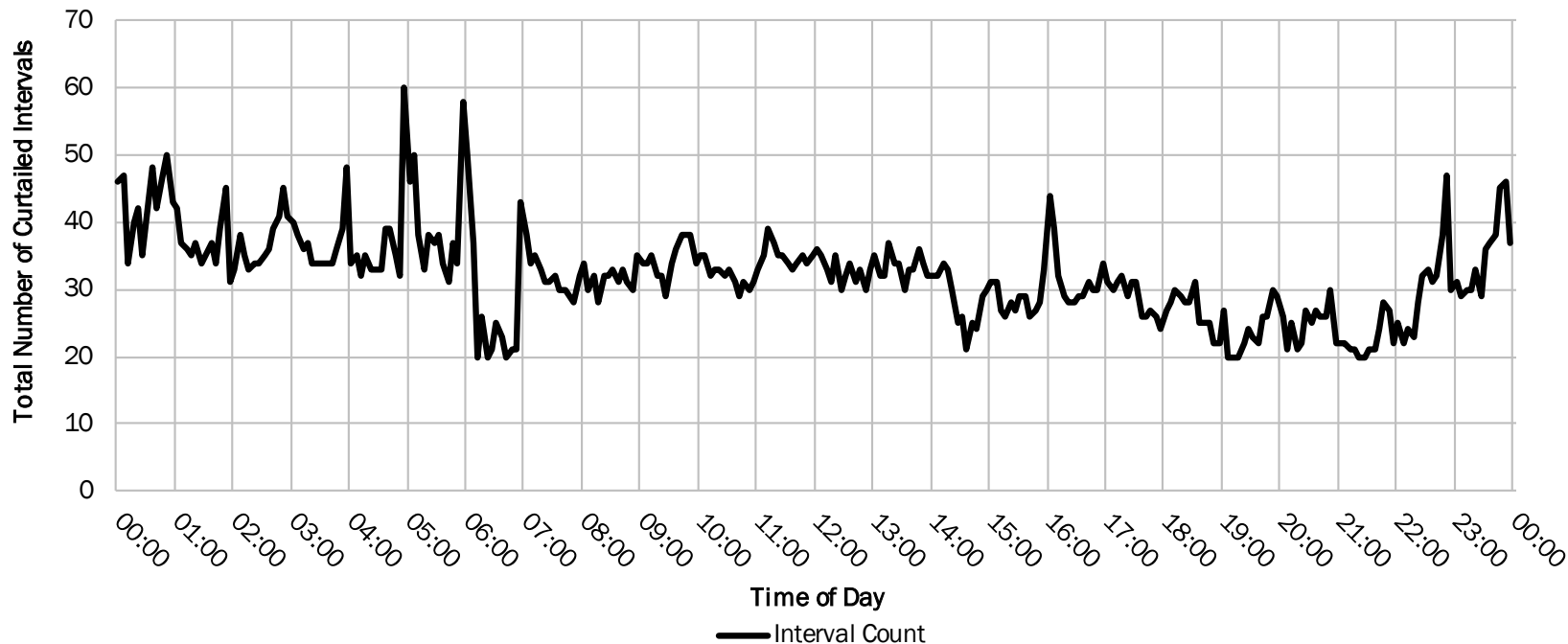
(12 Intervals = 1 Hour)



DRAFT – FOR DISCUSSION PURPOSES ONLY

NY Economic Wind Curtailments

Interval Count of Curtailments by Time of Day (all of 2019)

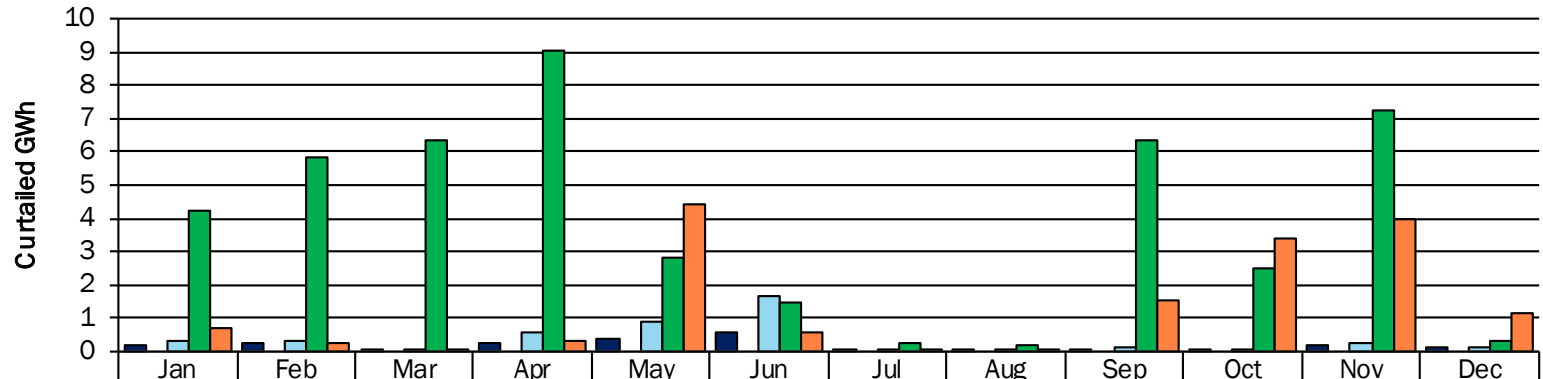


DRAFT – FOR DISCUSSION PURPOSES ONLY

NY Economic Wind Curtailments

Total Annual Estimated Curtailed Energy (GWh)				
West	Genesee	Central	North	Mohawk Valley
2.2	0.0	4.4	46.6	16.4

NYCA Zones - Monthly Estimated Curtailed Energy for 2019

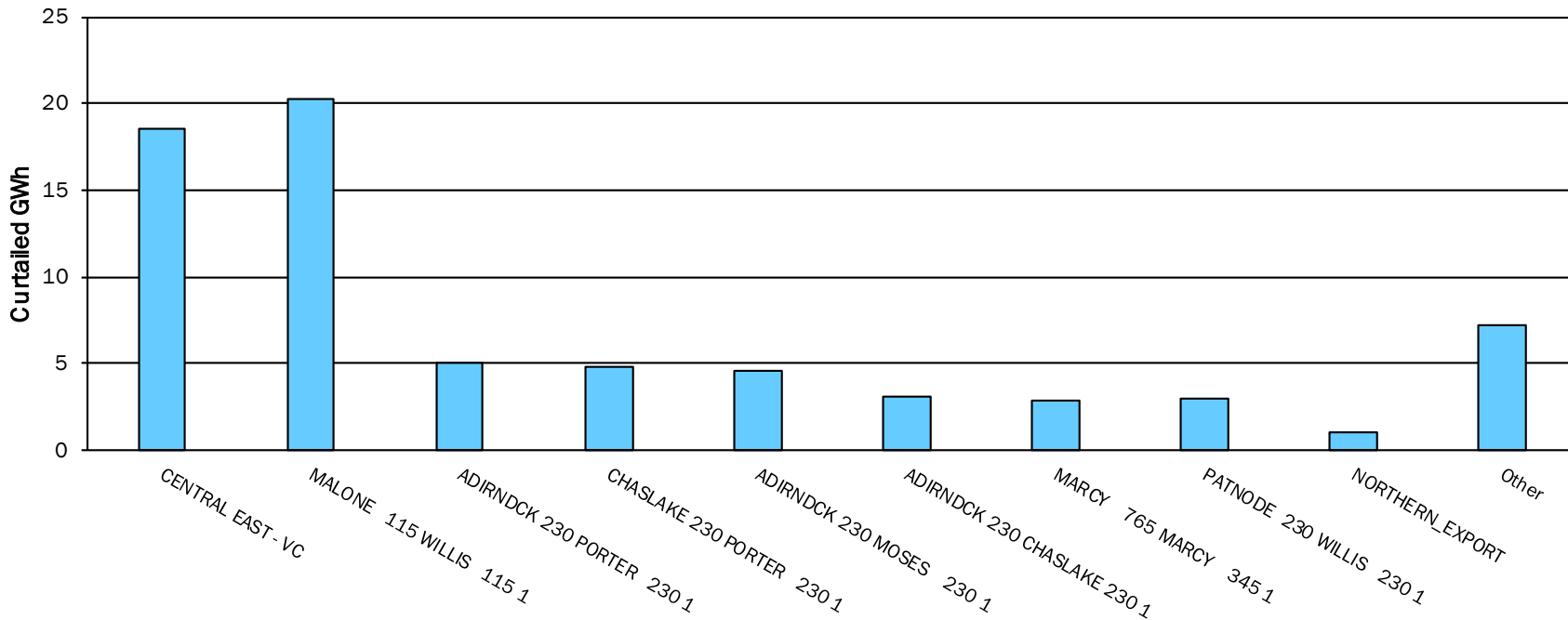


	Jan	Feb	Mar	Apr	May	Jun	Jul	Aug	Sep	Oct	Nov	Dec
■ WEST	0.2	0.2	0.1	0.2	0.4	0.6	0.0	0.0	0.1	0.1	0.2	0.1
■ GENESSEE	0.0	0.0	0.0	0.0	0.0	0.0	0.0	0.0	0.0	0.0	0.0	0.0
■ CENTRAL	0.3	0.3	0.0	0.5	0.9	1.7	0.0	0.0	0.2	0.1	0.2	0.1
■ NORTH	4.2	5.8	6.4	9.1	2.8	1.5	0.3	0.2	6.3	2.5	7.3	0.3
■ MOHAWK VALLEY	0.7	0.3	0.0	0.3	4.4	0.6	0.0	0.0	1.6	3.4	4.0	1.1

DRAFT – FOR DISCUSSION PURPOSES ONLY

NY Economic Wind Curtailments

NYCA Wind Plants 2019 - Annual Curtailed Energy by Constraint



DRAFT – FOR DISCUSSION PURPOSES ONLY

Behind the Meter (BTM) Solar 2019

DRAFT – FOR DISCUSSION PURPOSES ONLY

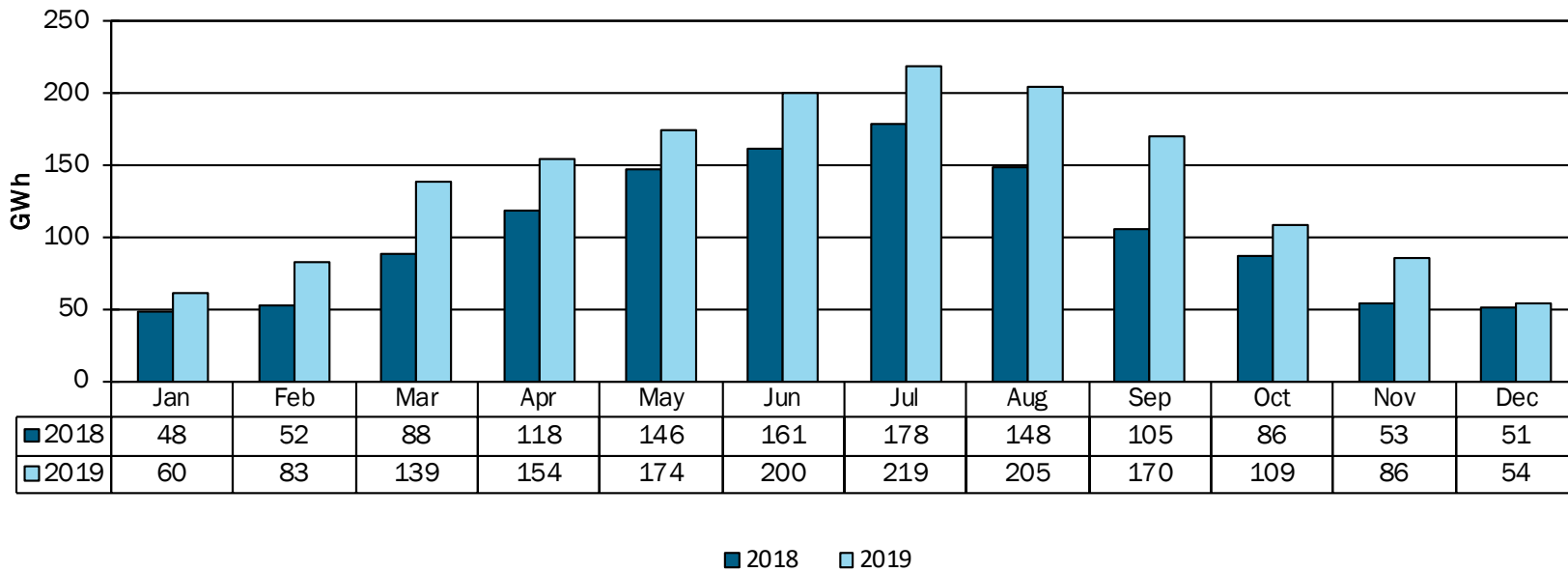
BTM Solar Data Monitoring

- **The NYISO's Solar/PV monitoring vendor automatically monitors the power output in real-time of solar production sites across NY that are distributed substantially the same as the total BTM facilities in the state**
 - There are approximately 9,032 individual solar production sites across NY representing 107 MWs
- **BTM solar production, at the zonal level, is calculated by scaling up the vendor's readings to the estimated BTM solar installed capacity**
- **At the end of 2019, BTM Solar Capacity was estimated to be 1,766 MWs**

NY BTM Solar Generation

Total Annual BTM Solar Production (GWh)	
2018	2019
1,234	1,652

NYCA BTM Solar - Estimated Monthly Production

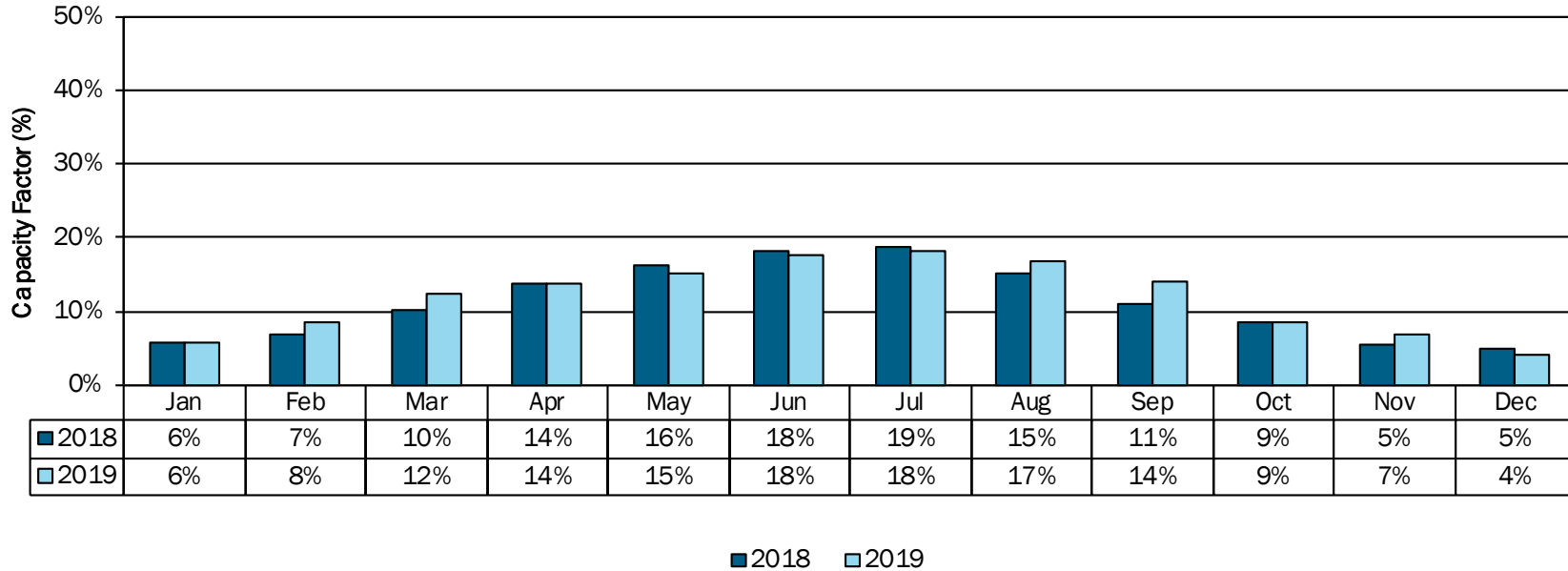


DRAFT – FOR DISCUSSION PURPOSES ONLY

NY BTM Solar Capacity Factors

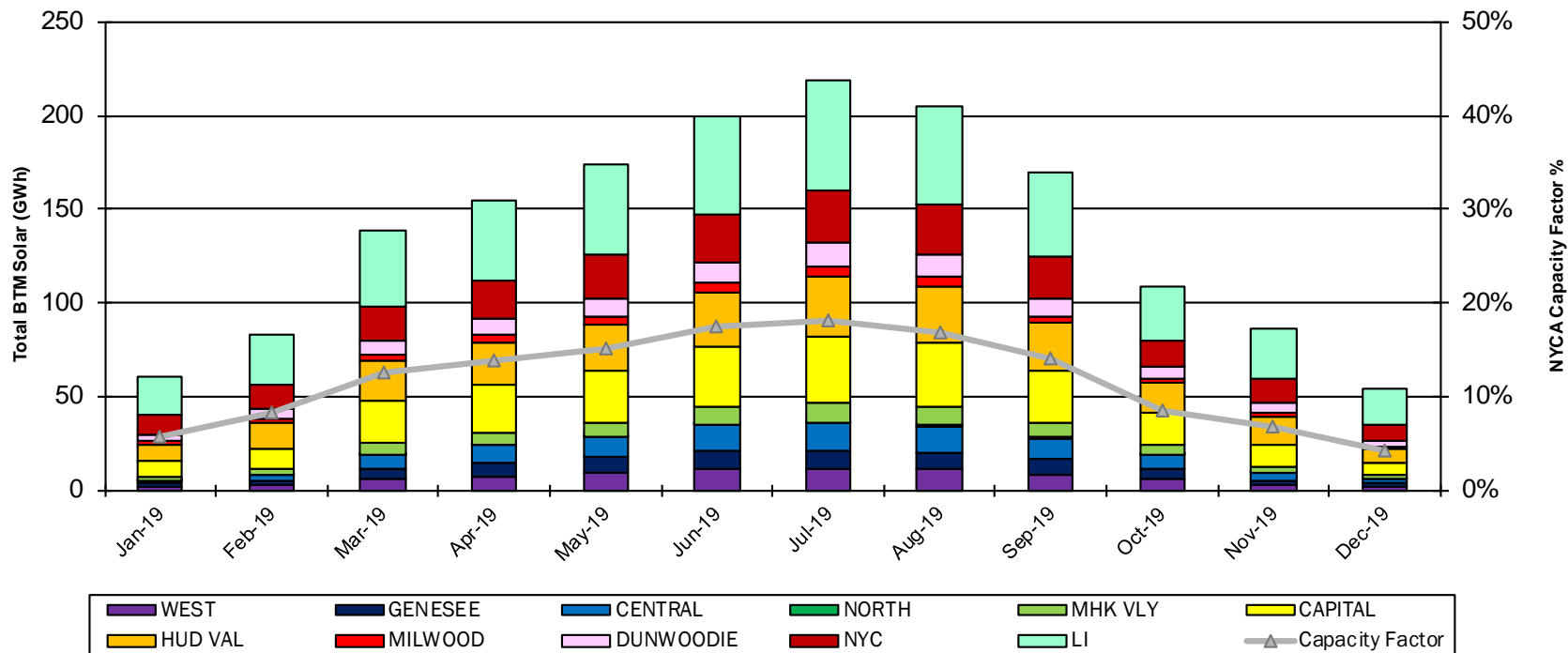
Annual BTM Solar Capacity Factor	
2018	2019
11%	12%

NYCA BTM Solar Generation - Estimated Capacity Factor



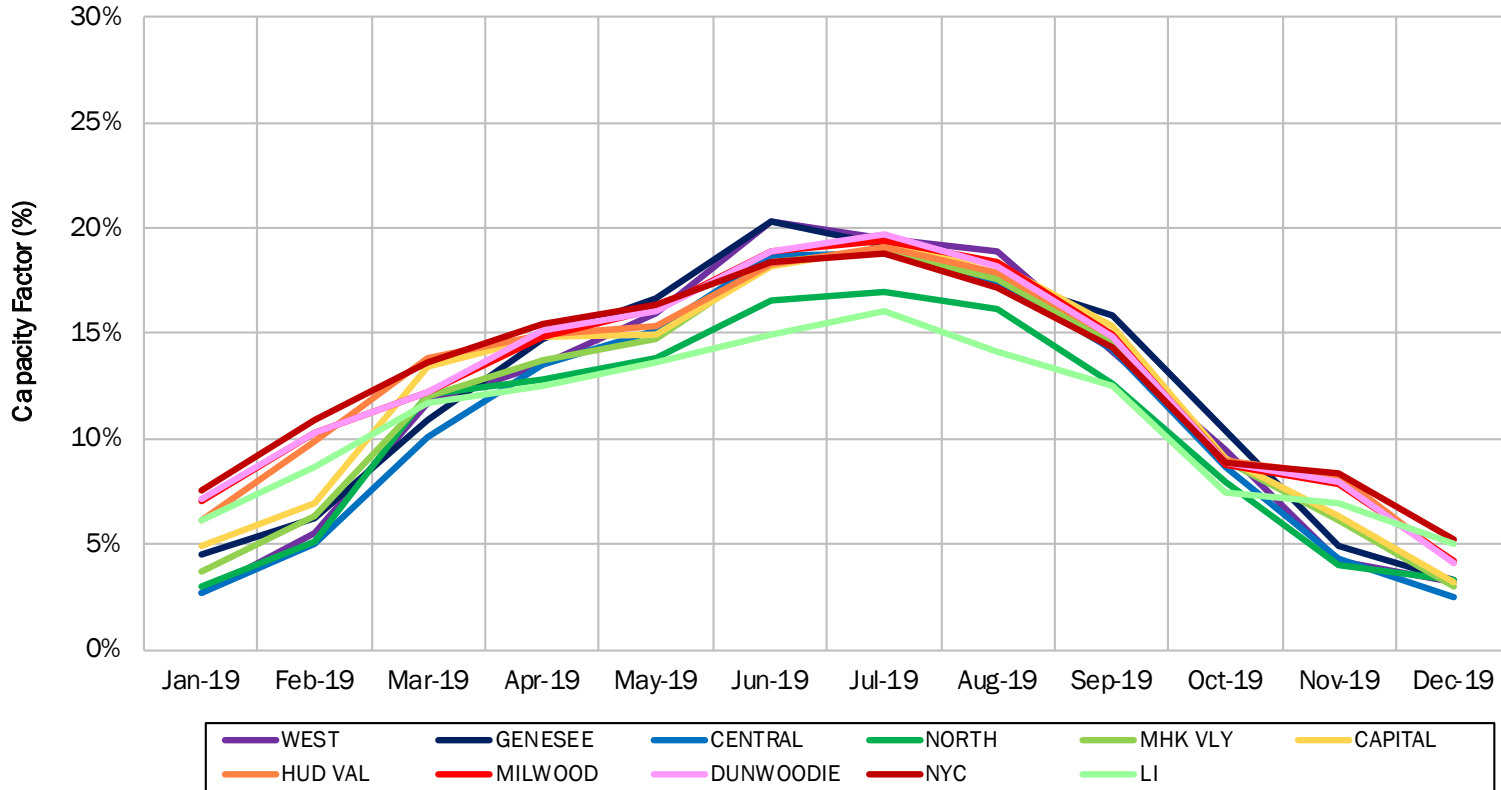
DRAFT – FOR DISCUSSION PURPOSES ONLY

Monthly BTM Solar Production by Zone



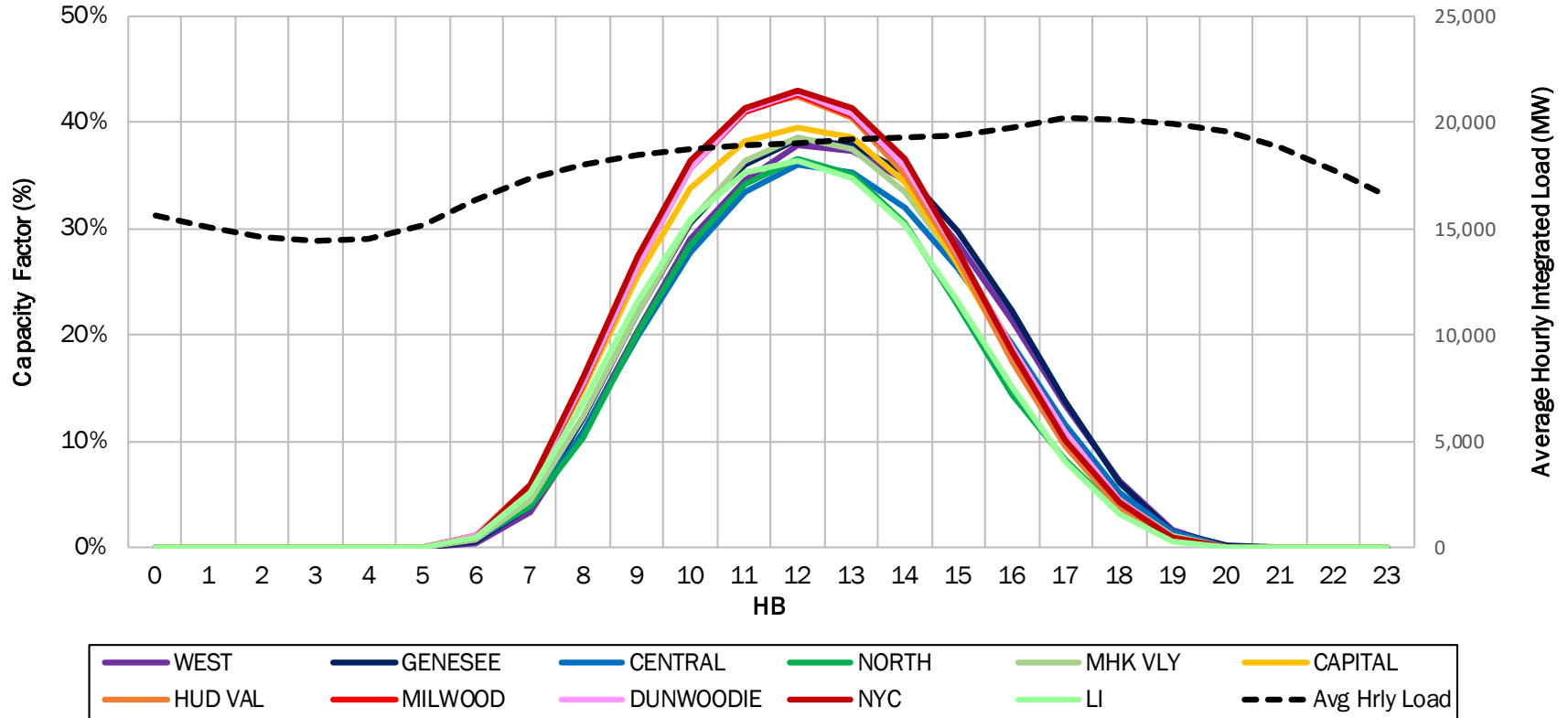
DRAFT - FOR DISCUSSION PURPOSES ONLY

Monthly BTM Solar Capacity Factors by Zone



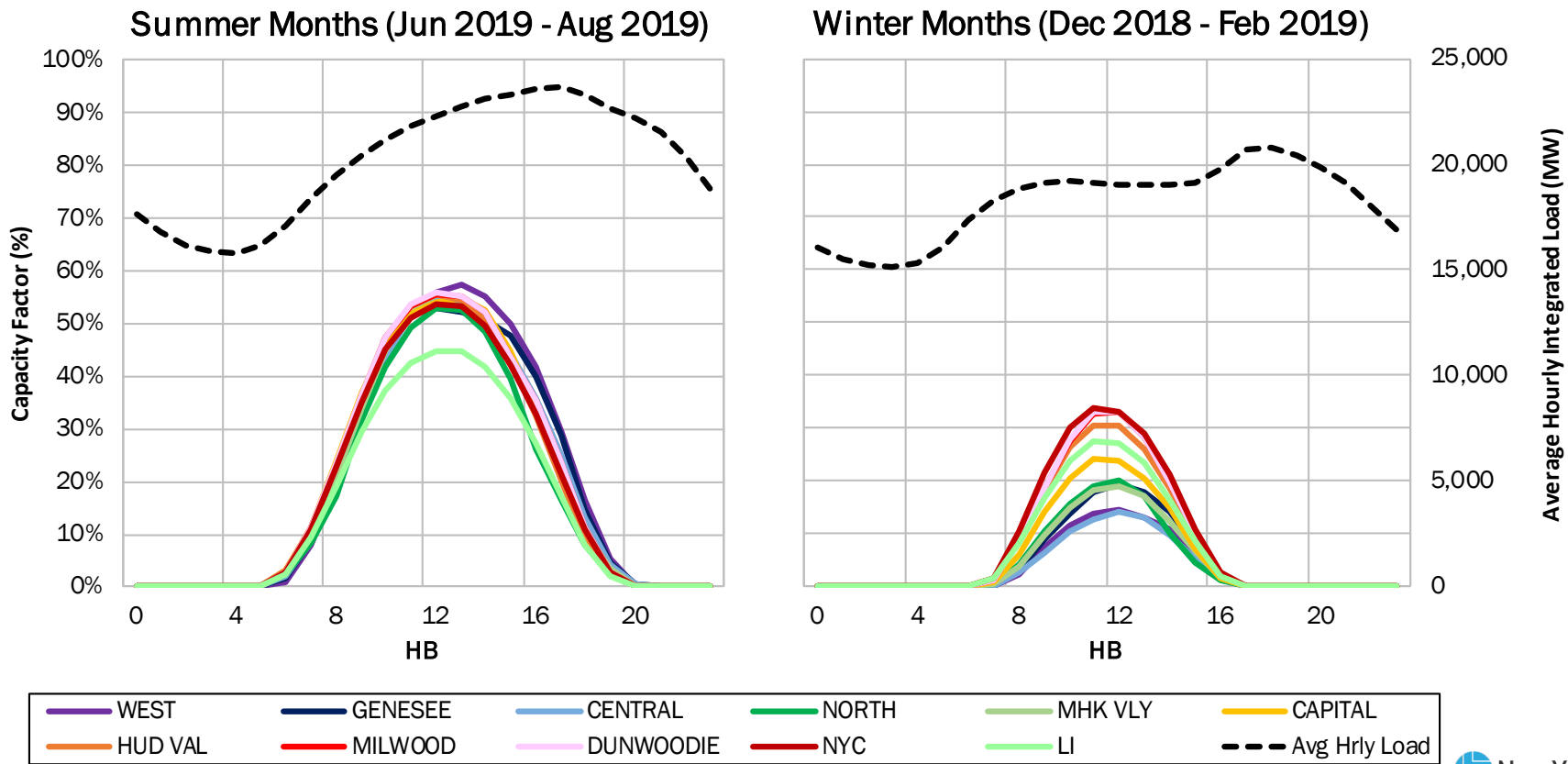
DRAFT – FOR DISCUSSION PURPOSES ONLY

2019 Average Hourly BTM Solar Capacity Factors by Zone

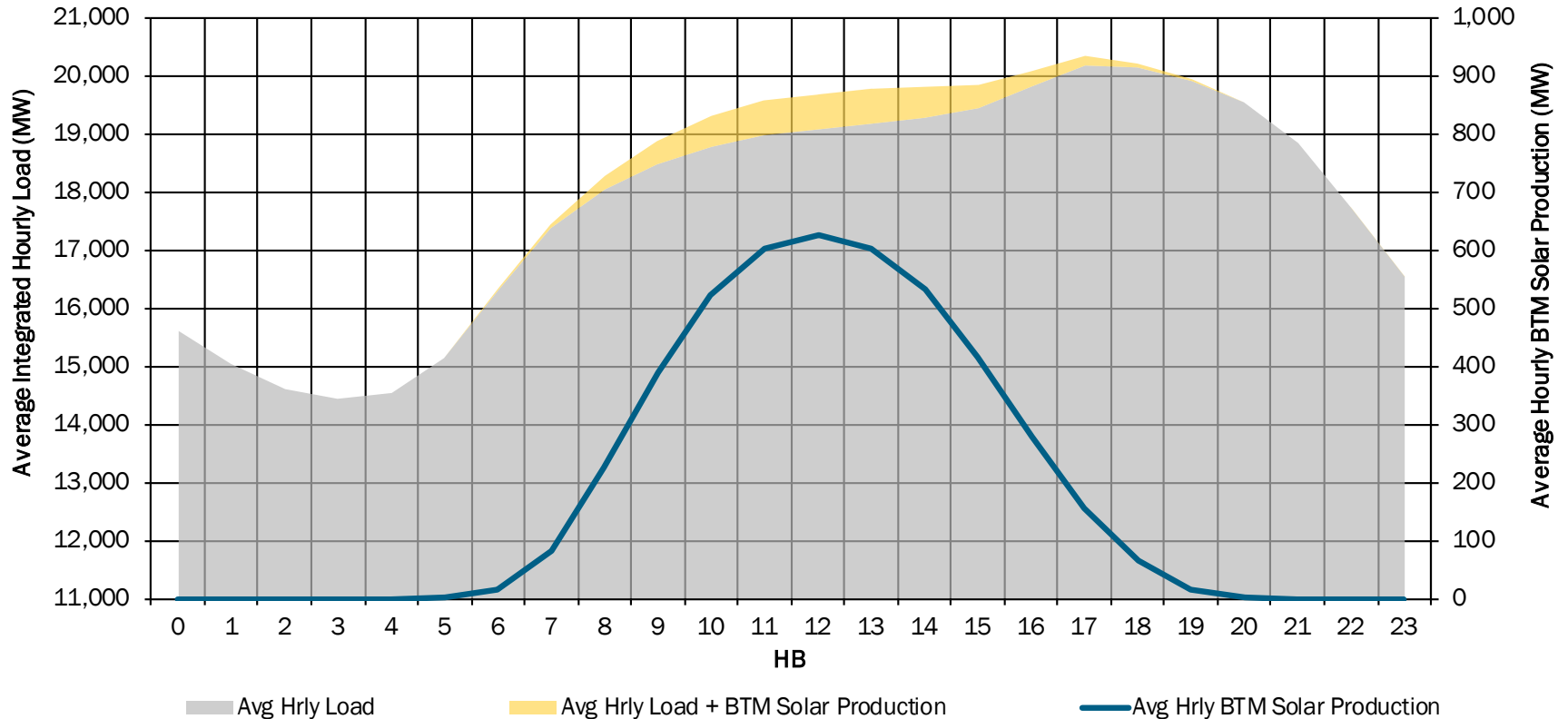


DRAFT - FOR DISCUSSION PURPOSES ONLY

2019 Seasonal Average Hourly BTM Solar Capacity Factors by Zone

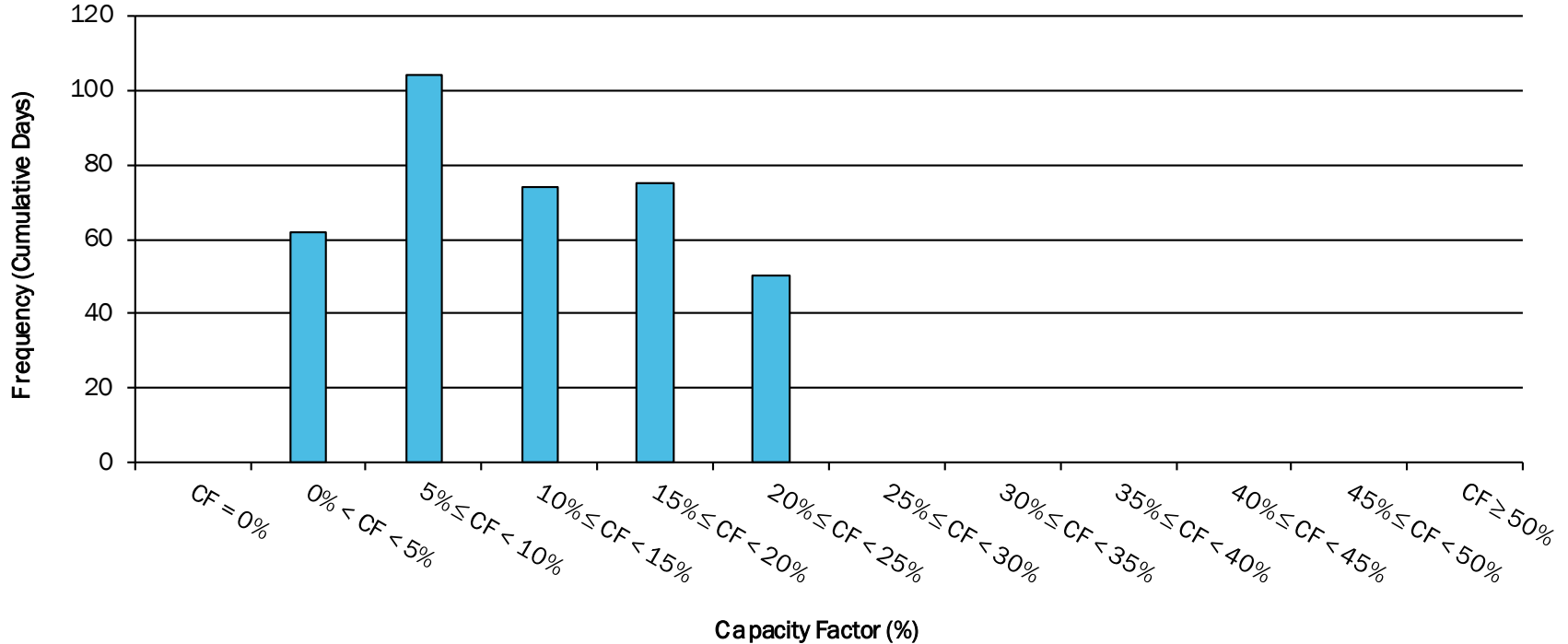


2019 Average Hourly Load with BTM Solar Production



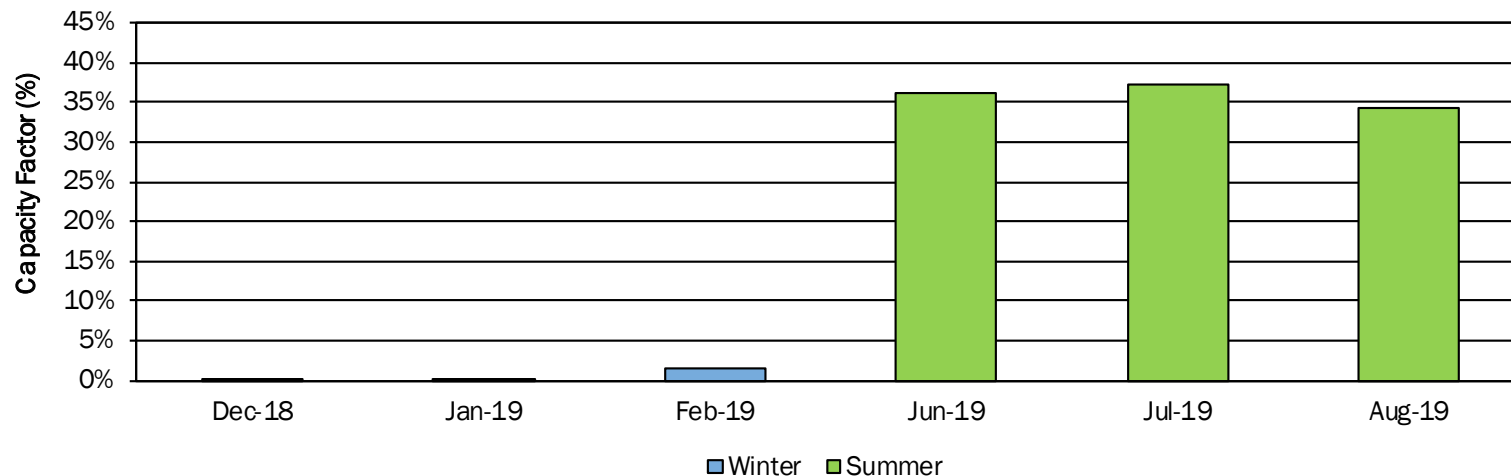
Solar Capacity Factor Distribution

Daily Capacity Factor (CF) Distribution for 2019



DRAFT – FOR DISCUSSION PURPOSES ONLY

2019 Average BTM Solar Capacity Factors over ICAP Months/Hours



Season	Months	Hours	Average Solar Capacity Factor
Winter	December - February	16:00 until 20:00	0.56%
Summer	June - August	14:00 until 18:00	35.92%

DRAFT – FOR DISCUSSION PURPOSES ONLY

Questions?

DRAFT – FOR DISCUSSION PURPOSES ONLY

Our mission, in collaboration with our stakeholders, is to serve the public interest and provide benefit to consumers by:

- Maintaining and enhancing regional reliability
- Operating open, fair and competitive wholesale electricity markets
- Planning the power system for the future
- Providing factual information to policymakers, stakeholders and investors in the power system

